

## In Defense of Animals

- *Records detailing the dimensions and composition of the current outdoor and indoor elephant enclosures.*

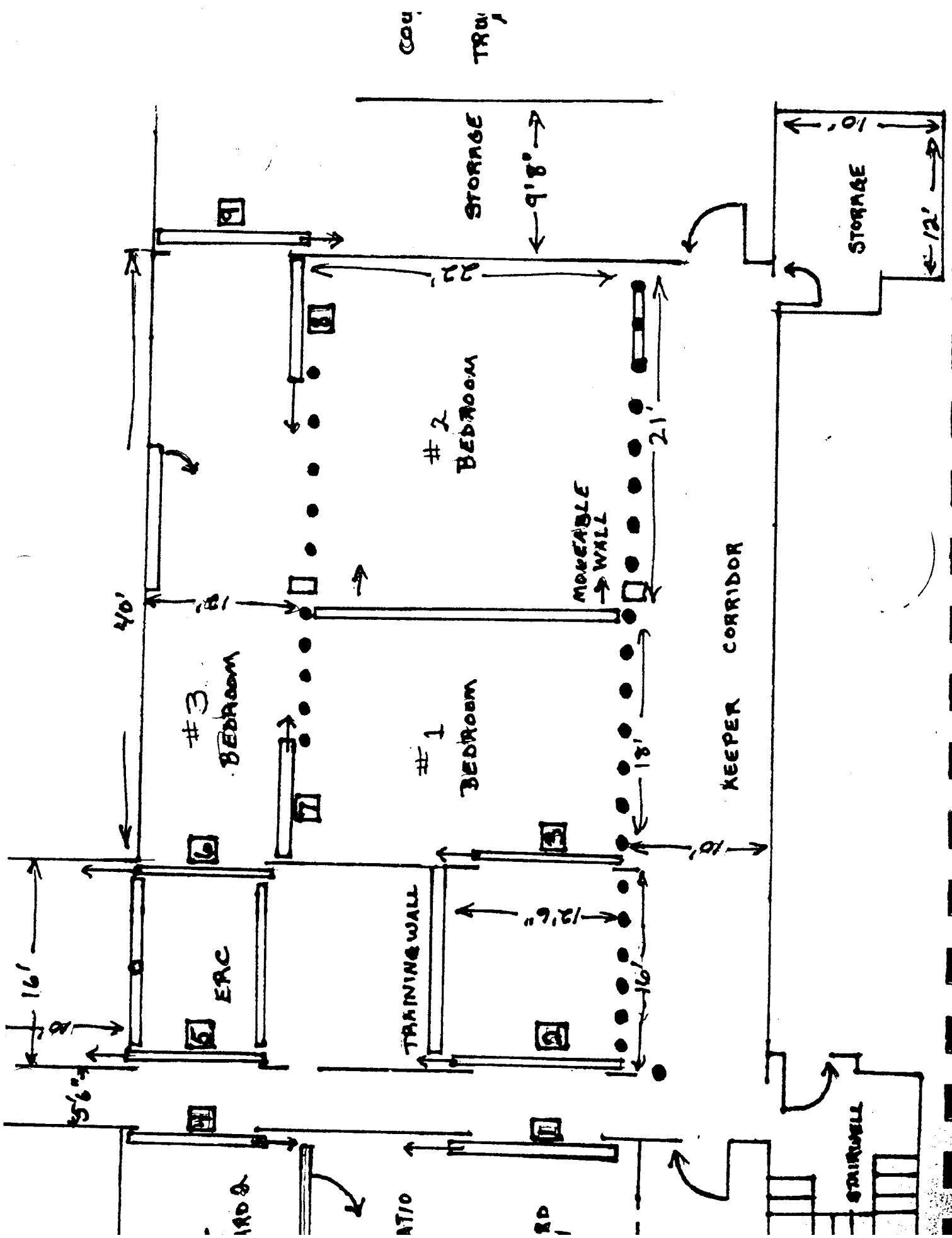
A new elephant barn was completed in late 1991 with elephants returning to the building in February 1992. The upstairs consists of staff offices, kitchen, hay storage, mechanical room and locker/restroom. The total square footage is 2, 107.

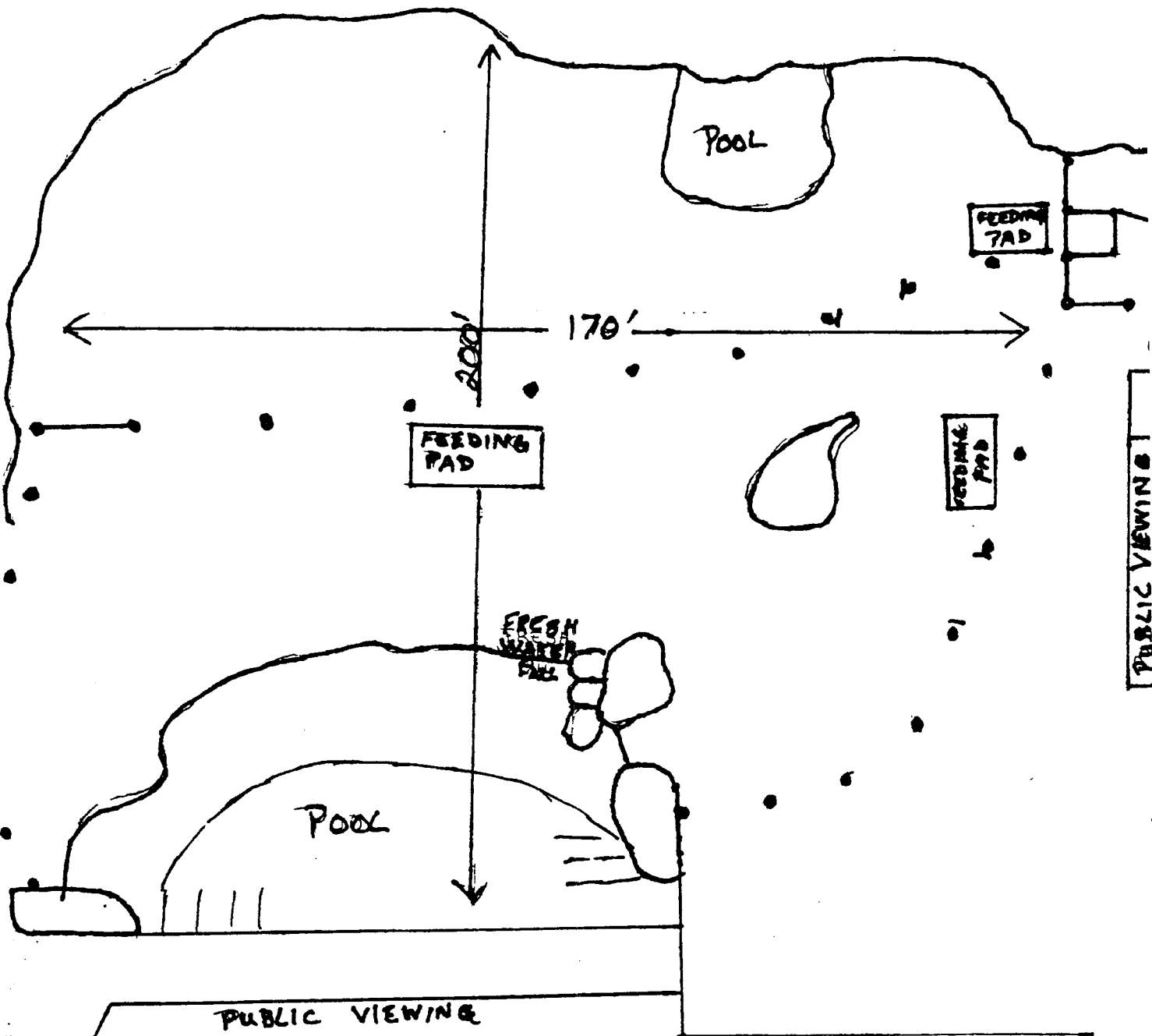
The main floor consists of housing for up to 4 elephants with holding areas divided by moveable steel bollards and concrete walls. The floors are heated and channeled to allow urine to travel to drains so the elephant's holding areas remain dry. The floor itself is coated with a Tufflex elastomeric floor covering to cushion the floor for the elephants.

The square footage of the downstairs area is 5, 568. This also includes small storage area, keeper safety corridor, training wall, and Elephant Restraint Chute (ERC) used for footwork.

There are two elephant yards totaling 34,000 square feet. Both have pools suitable for bathing and natural waterfall. Both exhibits have concrete feeding pads for hay and enrichment treats. The substrate in both yards is sand, which is replaced annually. Yards also contain large trees and enrichment objects.

See attached drawings for both indoor exhibit and outside yards.





SAND SUBSTRATE  
 SLACK CABLE WITH TRUCK ACCESS AT TWO POINTS